

**Offshore Supply,
ROV Support,
Emergency Response
and Rescue**



**NORTH STAR
SHIPPING**

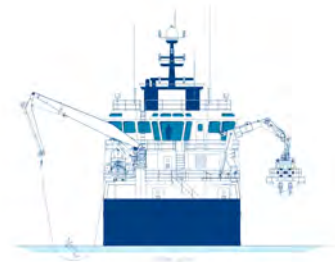
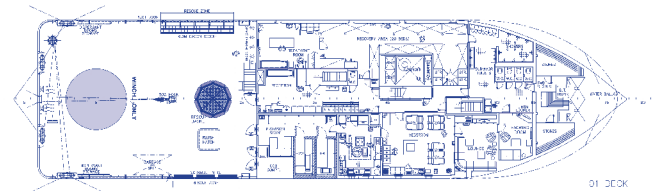
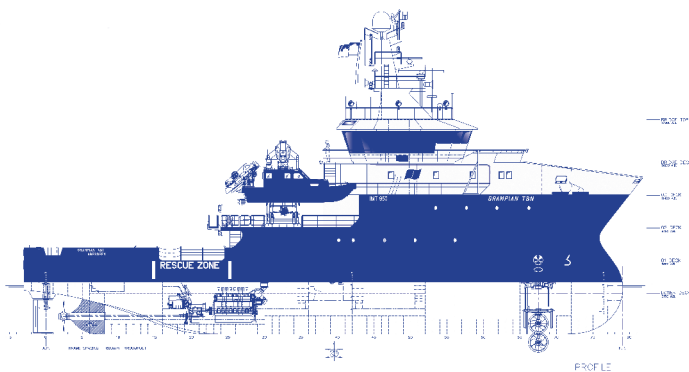
A member of the **CRAIG**GROUP

IMT 950



Grampian D-Class Emergency Response and Rescue Vessel

Build Yard > Balenciaga, Spain



North Star Shipping (Aberdeen) Ltd
12 Queens Road, Aberdeen AB15 4ZT

T +44 (0) 1224 261400
F +44 (0) 1224 261401

Flying the flag for Safety, Service and Quality
www.craig-group.com/ourfleet

IMT 950 Grampian D-Class Emergency Response and Rescue Vessel

Specifications >

DIMENSIONS

LOA	50.70 metres
LBP	47.40 metres
Breadth Moulded	13.00 metres
Draft Loaded / Depth	4.3 / 6.0 metres

TONNAGE

GRT	1,330 Tonnes
NRT	398 Tonnes
DWT	690 Tonnes

CAPACITIES AND CRANES

Fuel Oil (MGO) / Connection	300 m ³
Fresh Water / Connection	150 m ³
Ballast Water	Approx 350 m ³
Oil Based Mud / Connection	N/A
Brine / Connection	N/A
DMA (Base Fluid) / Connection	N/A
Dry Bulk(s) / Connection	N/A
Deck Area	Approx 120m ² (Steel Deck)
Deck Loading	3 Tonnes per metre ²
Deck Crane # 1	Helia 1.5T @ 15 Metres (3t @ 10m)
Deck Crane # 2	N/A
Deck Crane # 3	N/A
Winch	Option – Buoy Recovery System fitted
Wire Reel	N/A
Deck Tuggers	N/A

ENGINES/THRUSTERS/AUX

Main Engine(s)	MAK 6M20 (2133 BHP)
Propeller(s)	1 x CPP
Bow Thruster(s)	HRP Azimuth @ 500BHP
Stern Thruster(s)	N/A
Rudder Systems / Type	Fishtail HP Rudder
Aux Engines	2 x Cat @ 547kW per unit
Shaft PTOs	1 x PTO from Main Engine
Emergency Generators	1 x Emer Genset @ 365 kW

CONTROL SYSTEMS AND DYNAMIC POSITIONING

Control Positions	Fwd, Aft, Port and Stbd consoles
Full Manual Control	Fwd and Aft consoles
Integrated Joystick Control	Converteam Joystick System
Joystick Control	Aft, Port and Starboard consoles
Dynamic Positioning System	N/A
Fan Beam Laser	N/A
DGPS # 1	N/A
DGPS # 2	N/A
Hydro Acoustic Pos Ref # 1	N/A
Hydro Acoustic Pos Ref # 2	N/A
Vertical Taut Wire	N/A

RESCUE AND EMERGENCY RESPONSE EQUIPMENT

Daughter Craft Davit # 1	NED DECK MARINE Heave Compensated
Daughter Craft	Delta Phantom 10.25 metre (Diesel)
Daughter Craft Davit # 2	Option
Daughter Craft	Option
Fast Rescue Craft Davit # 1	NED DECK MARINE Heave Compensated
Fast Rescue Craft	1 x Avon SR 6.4 15 Man (Petrol)
Dacon Scoop	Dacon Scoop fitted
Dacon Rescue Crane	Heila Telescopic Boom crane 1.5t @ 15m
Cosalt Rescue Basket	Fitted and launched from Aft deck
Jason Cradles Frames	Fitted
Winch Area	Located on Aft Main Deck
Emer. Towing Capability	Towing Hook Fitted
Dispersant Tanks	2 x 5 Tonne Tanks below Main Deck
Dispersant Spray Booms	Fully outfitted Port and Starboard
Searchlights	4 x IBAK Kiel Fwd, Port, Stbd and Aft

NAVIGATION AND COMMUNICATION EQUIPMENT

Radar (Fwd)	Furuno 2817 ARPA	Furuno 2837 ARPA
Radar Rprtr (Aft)		Hatteland
ECDIS		Option – Microplot ECDIS
PLB System		N/A
DGPS(s)		Furuno DGPS 90
Gyro(s)		Anschutz S22 Gyro
Autopilot		Anschutz NP 60
Magnetic Comp		Gillie 2000
Echo Sounder		FE 700 ES
Digital Depth Recorder		FE 720
Navtex		Furuno NX 700 Navtex
Sat Comms	Inmarsat C Felcon, Fleet 77 CapSat (A3)	
MF/HF Radio		Furuno FS 2570 C (A3)
UHF		3 x UHF Units
VHF (Fwd)	FM8800 GMDSS VHF, ICOM ICM 401E	
VHF (Aft)	FM8800 GMDSS VHF, ICOM ICM 401E	
Helo Radio		ICOM IC A110
AIS		Jotrun AIS TR 2500
VHF Direction Finder		Taiyo TDL 1550
Doppler Log		Furuno DS 80
SSAS		Furuno Felcom
Portable VHF		3 x Jotrun GMDSS
Portable VHF		6 x ENTEL HT 640 VHF
Portable UHF		3 x ENTEL HT 880 UHF
Portable UHF		2 x Kenwood UHF
Sonic Helmets		4 x Sonic Helmets Mk 10
Smartpatch Phone		ICOM PS1

CREW FACILITIES

Crew Cabins	15 Man Single Berth cabins c/w en suite facilities
Recreation & Leisure	1 Messroom, 2 Lounges
Leisure	1 x Sauna, 1 x Gym, 1 x Ship's Office