

**Offshore Supply,
ROV Support,
Emergency Response
and Rescue**



**NORTH STAR
SHIPPING**

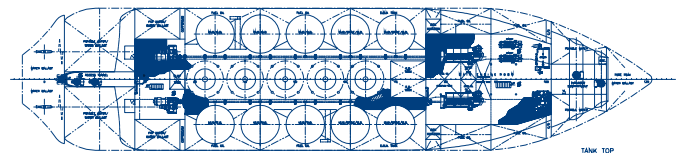
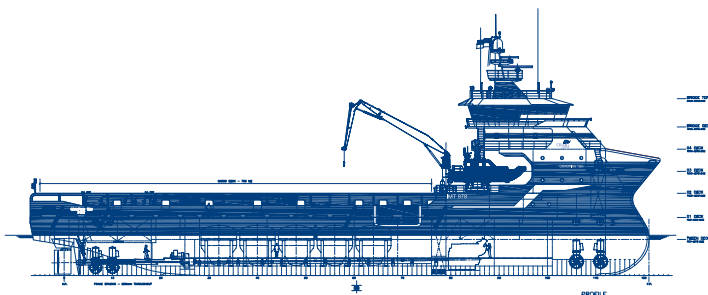
A member of the **CRAIG**GROUP

IMT 978



T-Class Platform Supply Vessel (DP II)

Build Yard > Balenciaga, Spain



North Star Shipping (Aberdeen) Ltd
12 Queens Road, Aberdeen AB15 4ZT

T +44 (0) 1224 261400
F +44 (0) 1224 261401

Flying the flag for Safety, Service and Quality
www.craig-group.com/ourfleet

IMT 978 T-Class Platform Supply Vessel (DP II)

Specifications



DIMENSIONS

LOA	78.2 metres
LBP	72.8 metres
Breadth Moulded	17.0 metres
Draft Loaded / Depth	5.5 metres

TONNAGE

GRT	2955 Tonnes
NRT	886 Tonnes
DWT	3890 Tonnes

CAPACITIES AND CRANES

Fuel Oil (MGO) / Connection	1484 m ³
Fresh Water / Connection	790 m ³
Ballast Water	690 m ³ – 1998 m ³
Oil Based Mud(s)	559.5 m ³ (3519 bbls)
Base Oil	233.6 m ³ (1,469 bbls)
Brine(s)	374 m ³ (2,352 bbls)
Dry Bulk(s) / Connection	264.5 m ³ / 5 Tanks
Deck Area	790 m ²
Deck Loading	5 Tonnes per metre
Deck Crane # 1	Dreggen 30 Tonne-metre knuckle boom
Deck Crane # 2	N/A
Deck Crane # 3	N/A
Tank Washing System	Fully Fitted

OIL RECOVERY SYSTEM

Recovery Tank	400t Oil Recovery Tanks (UK Code)
Deck Tuggers	2 x 10 tonnes tuggers

ENGINES/THRUSTERS/AUX

Main Engine(s)	2 x MAK 6M25 @ 2800 BHP each
Propeller(s)	2 x CPP units
Azimuth Thruster(s)	N/A
Bow Thruster(s)	2 x Schottel Tunnels @ 800 BHP
Stern Thruster(s)	2 x Schottel Tunnels @ 800 BHP each
Rudder Systems / Type	2 x Fishtail Hi-Lift Rudder
Aux Engines	2 x Cat 3406 Auxiliaries Diesels
Shaft PTOs	2 x Stamford PTO from Main Engine(s)
Emergency Generators	1 x Cummins Emer Genset

CONTROL SYSTEMS AND DYNAMIC POSITIONING

Control Positions	Fwd, Aft, Port & Stbd consoles
Full Manual Control	Fwd & Aft consoles
Integrated Joystick Control	Kongsberg
Joystick Control	Kongsberg C-Joy
Dynamic Positioning System	Kongsberg DP II System
Kongsberg Radius Reference System	Fitted
DGPS # 1	Fitted
DGPS # 2	Fitted
RadaScan	Fitted
Hydro Acoustic Pos Ref # 1	Option

RESCUE AND VESSEL EQUIPMENT

Certified in compliance with UK Standby Regulations

Fast Rescue Craft Davit # 1	Grampian Hydraulics Davit System
Fast Rescue Craft	15 Man Avon FRC/FRB
Daughter Craft Davit (Option)	Grampian Hydraulics Davit System
Daughter Craft (Option)	1 x Delta Phantom Daughter Craft / FRC
Recovery Rooms	ERRV Class B compliant
Hospital	ERRV Class B compliant
Dacon Scoop	Fitted
Dacon Rescue Crane	Fitted
Cosalt Rescue Basket	Fitted
Jason Cradles Frames	Fitted
Winch Area	Fitted
Emer. Towing Capability	N/A
Dispersant Tanks	Fitted
Dispersant Spray Booms	Fitted
Searchlights	4 x Wheelhouse mounted & remote operated

NAVIGATION AND COMMUNICATION EQUIPMENT

Radar (Fwd)	1 x Furuno X Band	1 x Furuno Y Band
ECDIS		Fitted
PLB System		N/A
DGPS(s)		2 Furuno DGPS or eqv
Gyro(s)		3 x Anschutz S22 Gyro
Autopilot		Anschutz Nautopilot
Magnetic Comp		1 x Magnetic Compass
Echo Sounder		FE 700 ES
Digital Depth Recorder		FE 720
Navtex		Furuno NX 700
Sat Comms		Fully fitted and A3 compliant
MF/HF Radio		1 x Furuno
UHF		N/A
VHF (Fwd)		Fully fitted
VHF (Aft)		Fully fitted
Helo Radio		N/A
AIS		Jotrun AIS TR 2500
VHF Direction Finder		Furuno DF FD 527
Doppler Log		Tbc
SSAS		Furuno Felcom
Portable VHF		3 x Navico GMDSS
UHF Base		Fully fitted
Portable UHF		Fully fitted
Sonic Helmets		Fully fitted
Smartpatch Phone		Fully fitted

CREW FACILITIES

Crew Cabins	18 Man Single cabins c/w en suite facilities, Hospital & Survivor Areas in compliance with the UK ERRV Code
Recreation & Leisure	1 Messroom, 2 Lounges, Sat TV System
Leisure	1 x Ship's Office